

Residential 1-Line 2011

Multifamily Instructions

User's Manual



Copyright 2010
Durand & Associates

Using 1-Line 2011 with Excel

Excel 1997-2003

It is our recommendation that Residential 1-Line 2011 should be run in conjunction with Excel 1997-2003. This product was designed with Excel 1997 and runs fine with all versions of Excel through 2003.

Excel 1997-2003 creates files with a **.xls** file extension. This **.xls** file extension is the most common file extension for the Excel spreadsheets.

Excel 2007

Excel 2007 (and later) creates files with a new file extension **.xlsx**. This file extension is not reverse compatible with previous versions of Excel. Thus if you create files with Excel 2007 other users may not be able to use them.

Having said that we have created a version of Residential 1-Line 2011 that uses the new Excel 2007 **.xlsx** file extension. We have tested this **.xlsx** version and found the following:

1. The new Excel 2007 takes longer to load files and the recalculation time is a little slow.
2. The menus in Excel 2007 are not the same and some commands no longer exist.
3. We tried running the old **.xls** files in Excel 2007 "Compatibility Mode" and found it seemed to run properly
4. The new **.xlsx** files we created seem to run properly (and slow) with Excel 2007.

Summary

Microsoft plans to release Service Pack #1 for Excel 2007 at some date in the future. This may or may not solve the slow performance problems.

NOTE

We have both Excel 2003 and Excel 2007 installed on our machines. You may also wish to installed both version of Excel on your machines.

RESIDENTIAL 1-LINE 2011

COPYRIGHT 2010 - DURAND & ASSOCIATES

This software and manual are protected by Federal Copyright Laws and may not be copied or duplicated for the purpose of resale or distribution. A registered user may copy the template files for their own personal use provided they retain sole possession of such copies.

The **Residential 1-Line 2011** software is a spreadsheet template software program for calculating main service switchboard, sub panels, feeder sizes and Residential 1-Line drawings. This program may be used for single and multifamily dwelling loads. The **Residential 1-Line 2011** software is for reference purposes only, and Durand & Associates cannot assume any responsibility for the accuracy of the program contents. In using this program the user agrees to hold harmless and wave all claims against Durand & Associates.

SOFTWARE REQUIREMENTS

Residential 1-Line 2011 was created with Microsoft Excel 97. To use these templates you must have Microsoft Excel, Version 97 or later, installed on your computer.

If you have Excel 2007 be sure to read page 2 of this manual before using this program.

INTRODUCTION

The **Residential 1-Line 2011** software is a spreadsheet template program. The program was designed for use in conjunction with Microsoft Excel on the Windows platform. The program should also work on other platforms that can read and write Microsoft Excel 97 file formats.

LOADING THE PROGRAM

Insert the CD in your drive and follow the setup instructions.

The installation of Residential 1-Line will create the following folder on your C drive.

C:\Residential 1-Line 2011

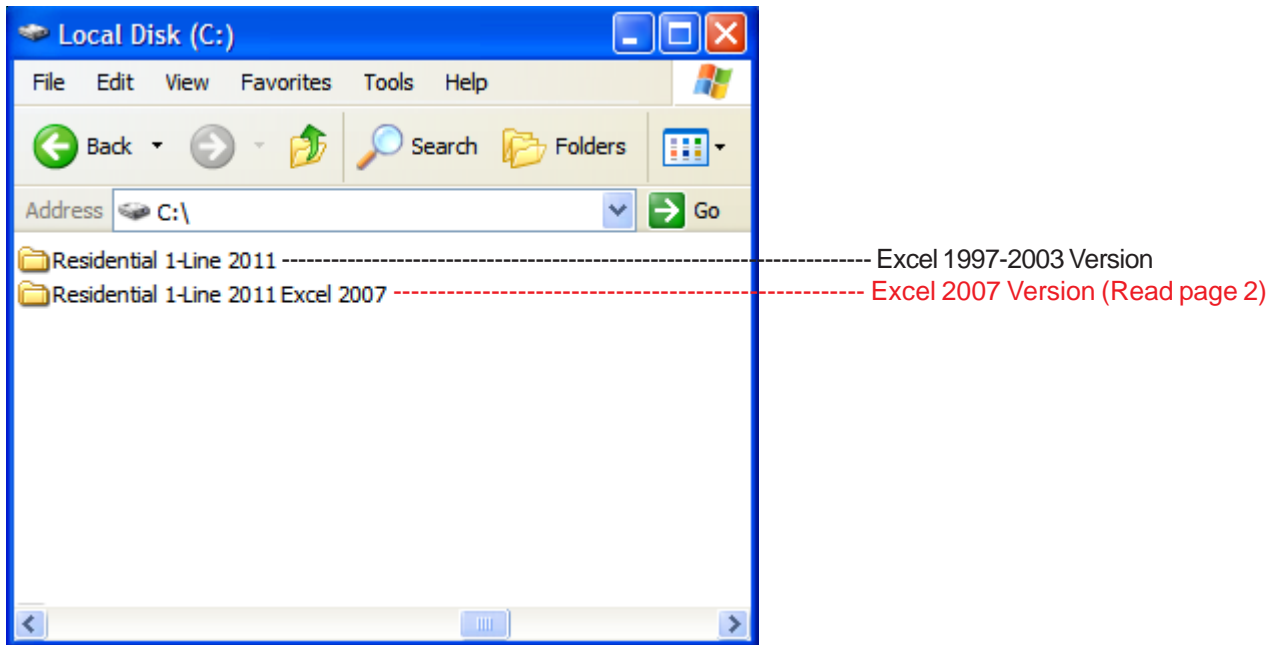
C:\Residential 1-Line 2011 Excel 2007 ([Read page 2 before using this version](#))

EXPLORING THE PROGRAM

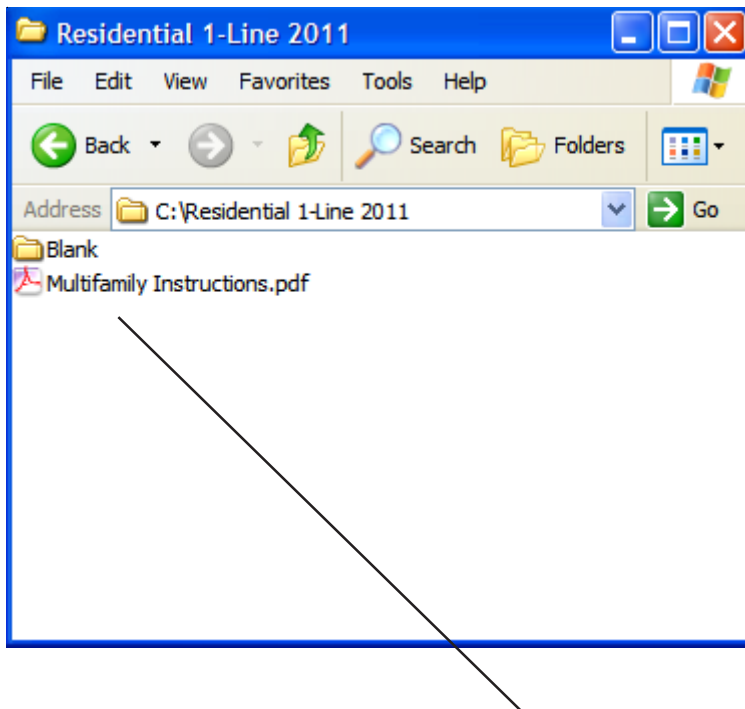
Residential 1-Line software is a complex spreadsheet template program. The program uses 32 files which link to one another. **DO NOT CHANGE THE FILE NAMES.** If a file name is changed the template can become corrupt.

LOCATING THE PROGRAM FILES

The Residential 1-Line templates are located on your C: drive.



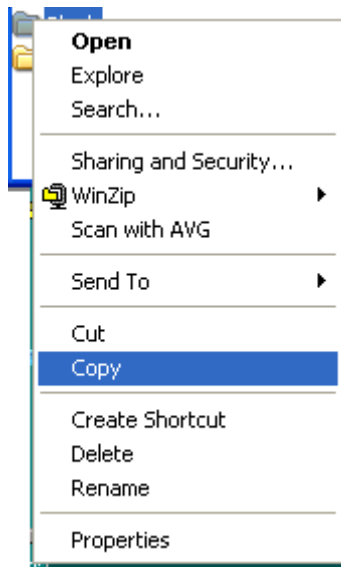
If you double click on the Residential 1-Line folder, you will find 1-file & 1-folder.



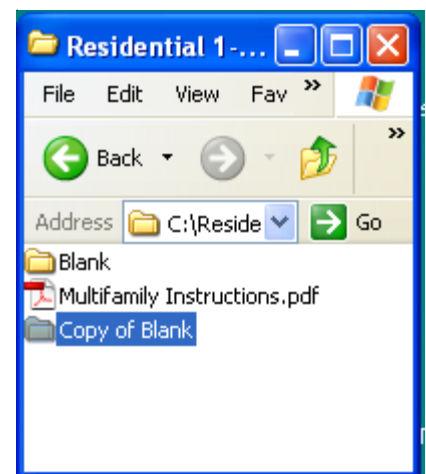
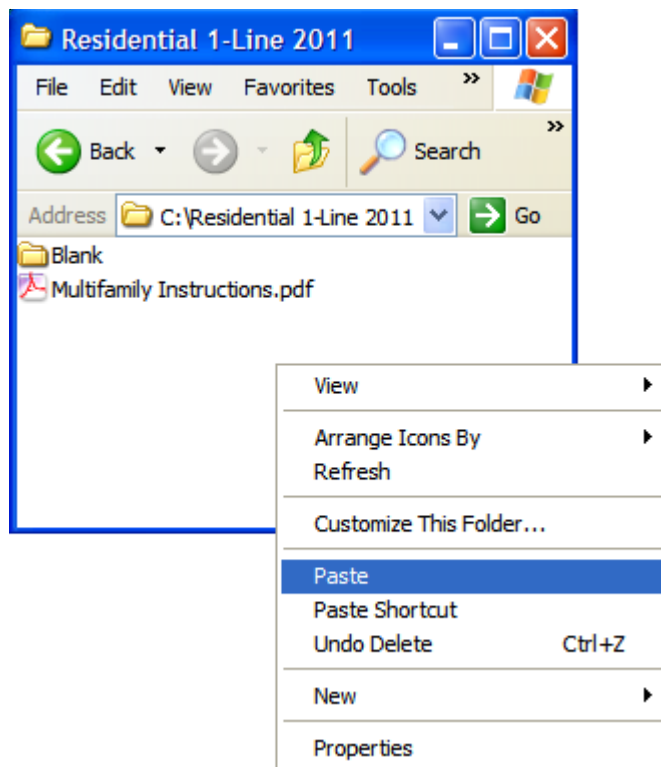
NOTE: Please double click on the "Multifamily Instructions" file and print the instructions.

STARTING A NEW PROJECT

If you want to start a new project, RIGHT CLICK on the blank folder and select COPY.



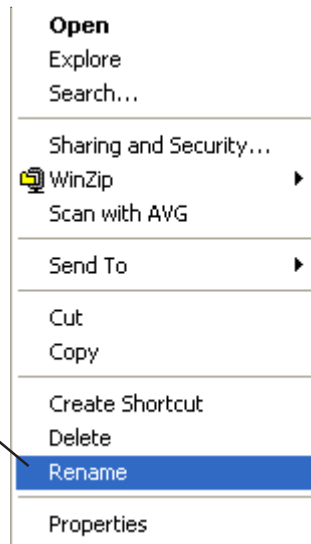
Then RIGHT CLICK on the white area of the window and select PASTE.



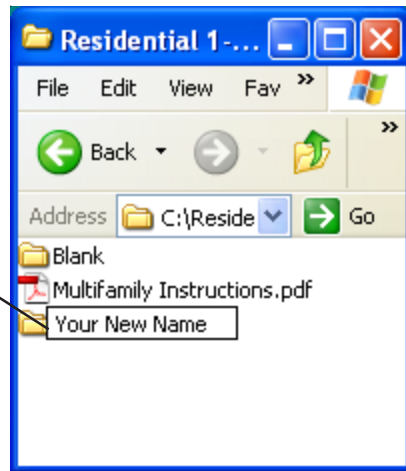
This will create a new folder titled "Copy of Blank".

RENAME THE FOLDER

You can RIGHT CLICK on the new folder and select the RENAME command.



Type in your new project name.



Use this method to create a new project each time you start a new Multifamily 1-Line.

Now that you have created a new folder close all windows.

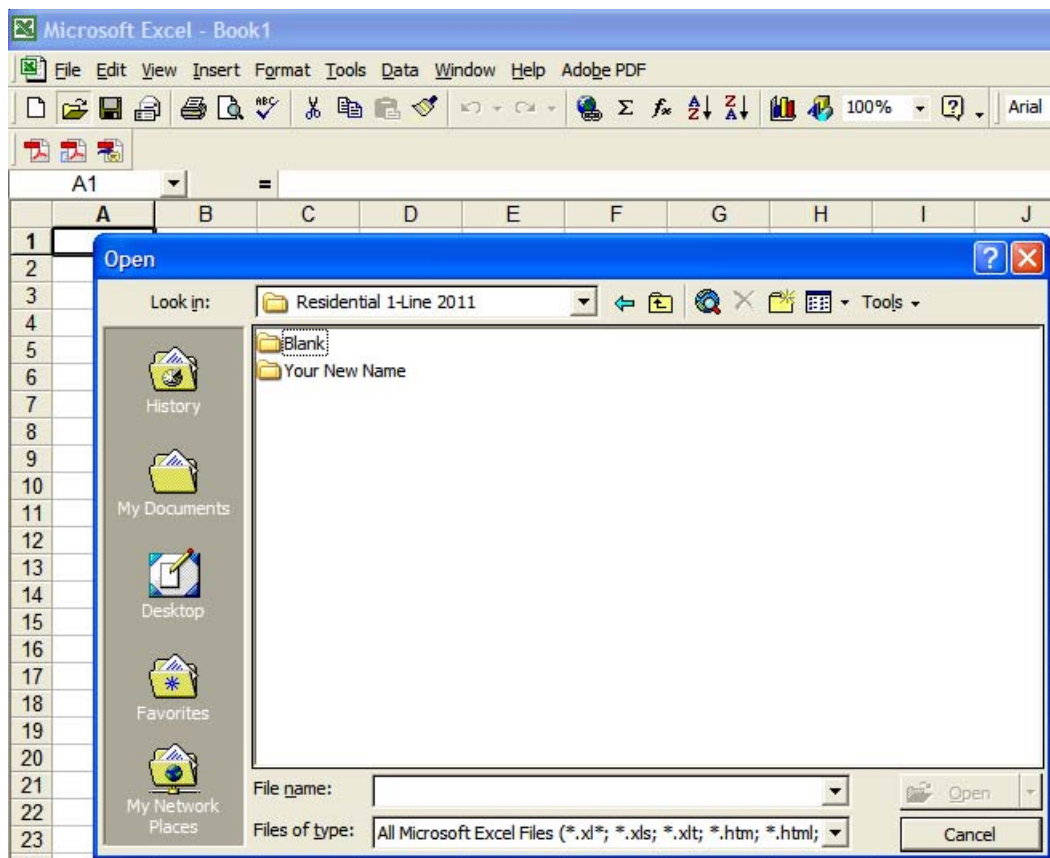
USING THE PROGRAM

Go to your START MENU, select ALL PROGRAMS, and select EXCEL.



This will start your Excel spreadsheet program.

Select the FILE OPEN command and locate the Residential 1-Line 2011 folder on your C: drive. Double click the Residential 1-Line 2011 folder to display the contents.

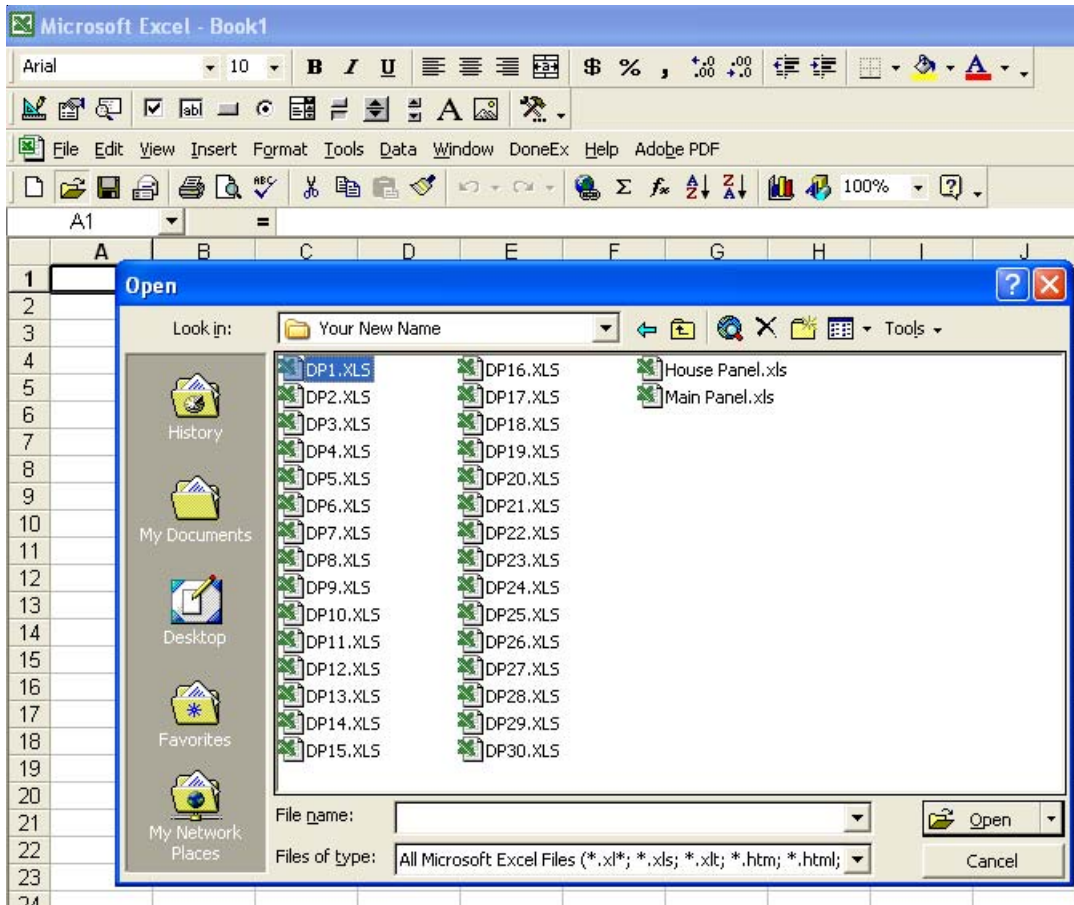


Now displayed are two (2) folders.

1. Blank
2. Your New Project (This is the folder you just created.)

Double click on "Your New Folder".

EXPLORING THE SAMPLE PROJECT



The files in this folder are MAIN PANEL, HOUSE PANEL, and DP1-DP30.

DO NOT RENAME THESE FILES (This will corrupt the files).

WORKING WITH THE MAIN PANEL

Double click on the MAIN PANEL file to display the Main Panel Template

This may take a few seconds to open as Excel updates the links to the other files.

Project Name & Address	
PROJECT NAME	SAMPLE PROJECT
ADDRESS	123 MAIN ST
CITY/STATE/ZIP	SOMEWHERE, CA 95620

Phase & Voltage	
CODE YEAR	2008
PHASE	3Y
HIGH VOLTAGE	208
LOW VOLTAGE	120

Main Breaker & House Panel	
MAIN BREAKER	YES
MINIMUM SERVICE SIZE	100
HOUSE PANEL	YES

GENERAL INFORMATION

- **Project Name** (Enter the project name)
- **Address** (Enter the address)
- **City/State/Zip** (Enter the city, state, and zip code)

- **Code Year** (Select the Code Year from the pulldown menu)
- **Phase** (Select the phase from the pulldown menu)
 - 1 = 1-Phase
 - 3Y = 3-Phase Wye)
- **High Voltage** (Enter high voltage)
- **Low Voltage** (Enter low voltage)
- **Main Breaker** (Select YES or NO)
 - You must have a main breaker when your have seven (7) or more meters.
- **Minimum Service Size** (Enter the minimum amps)
 - The minimum amps is the smallest size allowed for the service. If the load exceeds the minimum amps, the program will automatically size the service to the correct size.
- **House Panel** (Select YES or NO)

GENERAL INFORMATION (continued)

Voltage Drop, Fault Current & Ufer Ground	
VOLTAGE DROP CALCS	YES
FAULT CURRENT CALCS	YES
SHOW UFER GROUND	YES

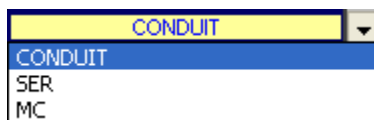
- **Voltage Drop Calcs** (Select YES or NO)
- **Fault Current Calcs** (Select YES or NO)
- **Show Ufer Ground** (Select YES or NO)

Service Entrance Feeder	
SERVICE FEEDER SIZING	AUTO
FEEDER TYPE	CONDUIT
LENGTH	50'
FAULT CURRENT AT SERVICE POINT	65000
WIRE CU/AL	AL
WIRE TEMP	75° C
% FACTOR	0%
GROUND WIRE	NO
WIRE TYPE	THHN
CONDUIT TYPE	PVC-40
OVERHEAD UNDERGROUND	OVERHEAD

SERVICE FEED IN AUTO MODE

When auto mode is selected, the program will automatically calculate the feeder size. If the design load exceeds 1,200 amps, you will have to use the manual mode.

- **Service Feeder Sizing** (Select AUTO or MANUAL)
- **Feeder Type** (Select CONDUIT, SER, or MC)



CONDUIT
SER
MC

- **Length** (Enter the length of the conduit or cable run)

SERVICE FEED IN AUTO MODE (continued)

FAULT CURRENT AT SERVICE POINT	65000
WIRE CU/AL	AL
WIRE TEMP	75° C
% FACTOR	0%
GROUND WIRE	NO
WIRE TYPE	THHN
CONDUIT TYPE	PVC-40
OVERHEAD UNDERGROUND	OVERHEAD

- **Fault Current at Service Point** (Enter fault current)

If you have an overhead service, enter the fault current at the service point. The service point would be at the top of your service riser at the service cap.

If you have an underground service where the utility pulls cable to the meter, enter the fault current at the meter.

- **Wire CU/AL** (Select CU or AL)

- **Wire Temp** (Select 60, 75 or 90)

- **% Factor** (Enter % Factor)

Enter the % factor. This will increase the design load by the percentage. Example: If the calculated load is 90 amps and you enter 20%, the program will add 18 amps to the calculated load giving you a design load of 108 amps.

- **Ground Wire** (Select YES or NO)

This option only appears when you are using a conduit feeder.

- **Wire Type** (Select Wire Type)

This option only appears when you are using a conduit feeder.

- **Conduit Type** (Select Conduit Type)

This option only appears when you are using a conduit feeder.

- **Overhead Underground** (Select OVERHEAD or UNDERGROUND)

SERVICE FEED IN MANUAL MODE (continued)

Service Entrance Feeder

SERVICE FEEDER SIZING	MANUAL
OVERHEAD UNDERGROUND	OVERHEAD
TYPE THE FEEDER DESCRIPTION	
LINE 1	2" EMT
LINE 2	3#2 THHN
LINE 3	1-#6 GND
LINE 4	
LINE 5	
UFER GROUND SIZE	#2 CU
FAULT CURRENT AT SERVICE POINT	28,875

- **Service Feeder Sizing** (Select AUTO or MANUAL)
- **Line 1** (Feeder Description)
- **Line 2** (Feeder Description)
- **Line 3** (Feeder Description)
- **Line 4** (Feeder Description)
- **Line 5** (Feeder Description)
- **Ufer Ground** (Enter Ufer Ground Size)
- **Fault Current at Service Point** (Enter fault current)
If you have an overhead service, enter the fault current at the service point. The service point would be at the top of your service riser at the service cap.

If you have an underground service where the utility pulls cable to the meter, enter the fault current at the meter.

NUMBER OF DWELLINGS (continued)

Number of Dwelling Units

# OF UNITS	30
------------	----

Enter the number of dwellings.

UPDATE DWELLING PANELS

If the Main Pane Voltage or Phase change, the Dwelling Panels may need updating. When this condition is present the dwelling panel display turns orange.

Dwelling Unit Labels

DP1	DP	<< UPDATE
DP2	DP	<< UPDATE
DP3	DP	<< UPDATE
DP4	DP	<< UPDATE
DP5	DP	<< UPDATE
DP6	DP	<< UPDATE
DP7	DP	<< UPDATE
DP8	DP	<< UPDATE
DP9	DP	<< UPDATE
DP10	DP	<< UPDATE

NOTE: To update dwelling panels simply open the file.
Example: Open the DP3 file and the file is automatically updated.

Dwelling Unit Labels

DP1	DP	<< UPDATE
DP2	DP	<< UPDATE
DP3	DP	
DP4	DP	<< UPDATE
DP5	DP	<< UPDATE
DP6	DP	<< UPDATE
DP7	DP	<< UPDATE
DP8	DP	<< UPDATE
DP9	DP	<< UPDATE
DP10	DP	<< UPDATE

File is Updated

DWELLING PANEL ERRORS

If a Dwelling Panel contains an error, the ERROR will be displayed.

DP1	DP
DP2	DP
DP3	ERROR IN SUB PANEL
DP4	DP
DP5	DP
DP6	DP

To correct this error open the Dwelling Panel File and correct the error.

CODE CHECK RANGES

The program automatically checks the Code requirements for ranges. If an error is detected, it will display the error and solution.

Code Check Ranges

THIS PROGRAM CALCULATES THE MULTIFAMILY SERVICE SIZE PER NEC 220.84

NEC SECTION 220.84(A)(2) REQUIRES THAT EACH DWELLING HAVE ELECTRIC COOKING EQUIPMENT.

YOUR SERVICE CONFIGURATION HAS 30 DWELLING UNITS, HOWEVER, ONLY 1 OF THE DWELLINGS HAVE A RANGE. CHECK EACH DWELLING AND MAKE SURE AT LEAST ONE (1) RANGE IS ENTERED

IF ANY OF THE DWELLINGS DO NOT HAVE A RANGE YOU WILL NEED TO ENTER 1 RANGE AT 8 KW. THIS WILL MEET THE REQUIREMENTS OF NEC 220.84(A)(2) EXCEPTION

CODE ELECTRIC HEATING OR COOLING

The program automatically checks the Code requirements for heating & cooling. If an error is detected, it will display the error and solution.

Code Check Electric Heating or Air Conditioning

THIS PROGRAM CALCULATES THE MULTIFAMILY SERVICE SIZE PER NEC 220.84

NEC SECTION 220.84(A)(3) REQUIRES THAT EACH DWELLING HAVE ELECTRIC HEATING OR AIR CONDITIONING.

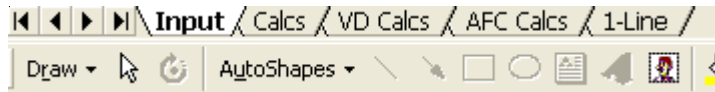
YOUR SERVICE CONFIGURATION HAS 30 DWELLING UNITS, HOWEVER, ONLY 1 OF THE DWELLINGS HAVE A HEATING OR AIR CONDITIONING LOADS. CHECK EACH DWELLING AND MAKE SURE EACH DWELLING HAS A HEATING OR AIR CONDITIONING LOAD.

IF ANY OF THE DWELLINGS DO NOT HAVE A HEATING OR AIR CONDITIONING LOAD YOU WILL NEED TO ENTER A LOAD. THIS WILL MEET THE REQUIREMENTS OF NEC 220.84(A)(3)

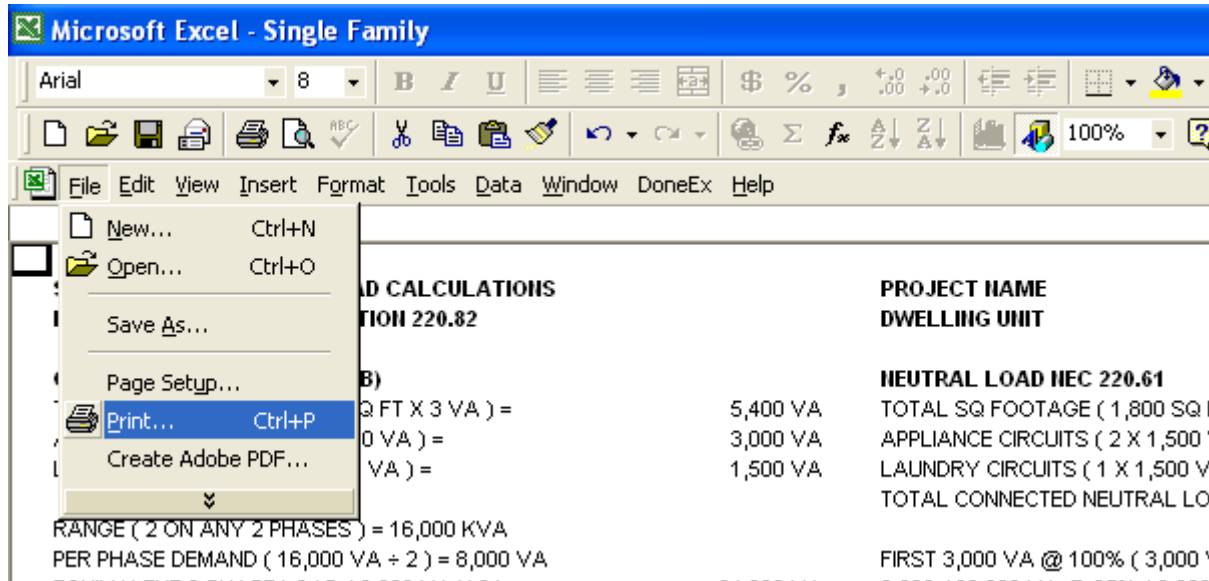
PRINTING

To print your load, voltage drop, or fault current calculations click on the Calcs Tabs.

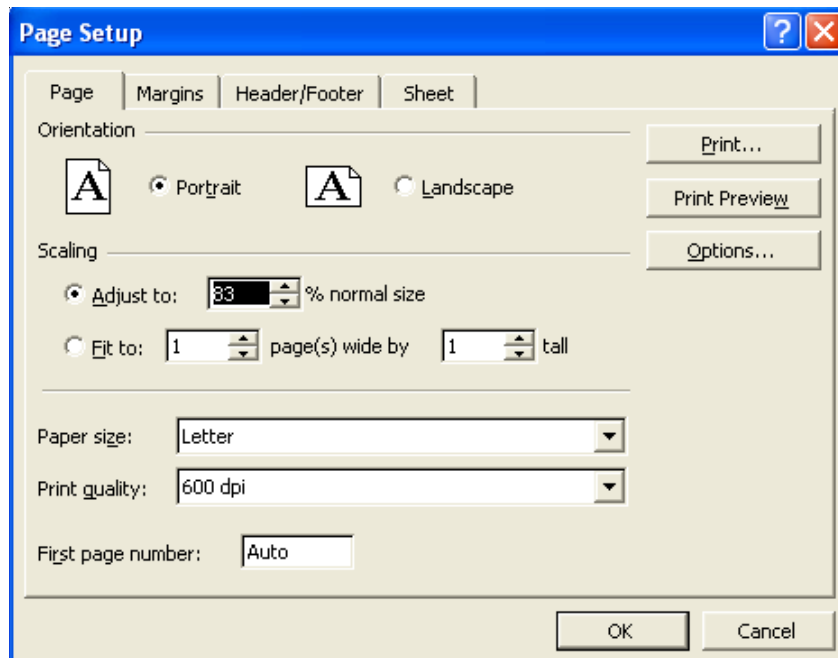
To print your 1-Line Drawing click on the 1-Line Tab.



Then select the File Print Command



If the calculations print on more than one page, go to the “File Page Setup Command” and reduce the percentage.



DWELLING UNIT TEMPLATES

GENERAL ENTRIES

PANEL NAME	DP
SELECT PHASE	1
ENTER TOTAL SQUARE FOOTAGE	700
APPLIANCE CIRCUITS (2 OR GREATER)	2
LAUNDRY CIRCUITS (ZERO OR GREATER)	1

PANEL NAME Enter panel name.
 PHASE Select 1 or 3Y.
 TOTAL SQUARE FOOTAGE Enter the total square footage of the dwelling.
 APPLIANCE CIRCUIT Enter the number of appliance circuits. (Minimum 2)
 LAUNDRY CIRCUITS Enter the number of laundry circuits.

FEEDER	
FEEDER TYPE	CONDUIT
LENGTH	50'
WIRE CU/AL	AL
WIRE TEMP	75° C
MINIMUM AMPS	100
% FACTOR	0%
GROUND WIRE Y/N	YES
SELECT WIRE TYPE	THHN
CONDUIT TYPE	EMT

FEEDER TYPE Select CONDUIT, SER, or MC
 LENGTH Enter total length of wire from service cap to panel.
 WIRE CU/AL Select CU or AL.
 WIRE TEMP Enter wire temperature 60, 75, or 90.
 MINIMUM AMPS Enter the minimum amps.
 % FACTOR Enter the % factor. This will increase the design load by the percentage. Example: If the calculated load is 90 amps and you enter 20%, the program will add 18 amps to the calculated load giving you a design load of 108 amps.

NOTE: Increasing the % factor forces the program to increase the wire size thus reducing the voltage drop.

GROUND WIRE Y/N Enter YES or NO. This option only appears when you are using a conduit feeder.
 SELECT WIRE TYPE Select wire type. This option only appears when you are using a conduit feeder.
 CONDUIT TYPE Select conduit type. This option only appears when you are using a conduit feeder.

GENERAL ENTRIES (continued)

MAJOR APPLIANCES		
DESCRIPTION	QTY	KVA (EA)
RANGE(S) & OVEN(S)	1	8
CLOTHES DRYER(S)	1	5
WATER HEATER(S)		

RANGE(S) & OVEN(S) Enter number of ranges, ovens, and KVA rating.

CLOTHES DRYER(S) Enter number of dryers and KVA rating.

WATER HEATER(S) Enter number of water heaters and KVA rating.

HEATING/COOLING	
1. ENTER THE TOTAL NAMEPLATE RATING KVA OF AIR CONDITIONING AND COOLING EQUIPMENT.	ENTER KVA 4
2. ENTER 100% OF THE NAMEPLATE RATING(S) OF THE HEAT PUMP WHEN THE HEAT PUMP IS USED WITHOUT ANY SUPPLEMENTAL ELECTRIC HEATING.	ENTER KVA 0
3. ENTER 100% OF THE NAMEPLATE RATING(S) IN KVA OF THE HEAT PUMP COMPRESSOR.	ENTER KVA 0
ENTER 100% OF THE SUPPLEMENTARY ELECTRIC HEAT USED WITH THE HEAT PUMP. NOTE: PROGRAM WILL AUTOMATICALLY ADJUST THIS AMOUNT TO 65%.	ENTER KVA 0
4. ENTER 100% OF THE NAMEPLATE RATING(S) OF ELECTRIC SPACE HEATING IF LESS THAN FOUR SEPARATELY CONTROLLED UNITS. NOTE: PROGRAM WILL AUTOMATICALLY ADJUST THIS AMOUNT TO 65%.	ENTER KVA 0
5. ENTER 100% OF THE NAMEPLATE RATING(S) OF ELECTRIC SPACE HEATING IF FOUR OR MORE SEPARATELY CONTROLLED UNITS. NOTE: PROGRAM WILL AUTOMATICALLY ADJUST THIS AMOUNT TO 40%.	ENTER KVA 0
6. ENTER 100% OF THE NAMEPLATE RATING(S) OF ELECTRIC THERMAL STORAGE AND OTHER HEATING SYSTEMS WHERE THE USUAL LOAD IS EXPECTED TO BE CONTINUOUS AT THE FULL NAMEPLATE VALUE. SYSTEMS QUALIFYING UNDER THIS SELECTION SHALL NOT BE CALCULATED UNDER ANY OTHER SELECTION IN 220.82(C).	ENTER KVA 0

Enter heating & cooling loads listed above.

GENERAL ENTRIES (continued)

MISC. 120 VOLT LOADS			AMPS
	DESCRIPTION	QTY.	EACH
1	DISHWASHER	1	11.5
2	DISPOSAL	1	6.5
3	MICROWAVE OVEN	1	9.8
4			
5			

Enter the description, number of units, and the amps for each item.

MISC. 208 OR 240 VOLT LOADS				AMPS	PHASE
	DESCRIPTION	QTY.	EACH		
1	WELL PUMP	1	18		1
2					
3					
4					
5					
6					
7					
8					
9					
10					

Enter the description, number of units, amps, and the phase for each item.

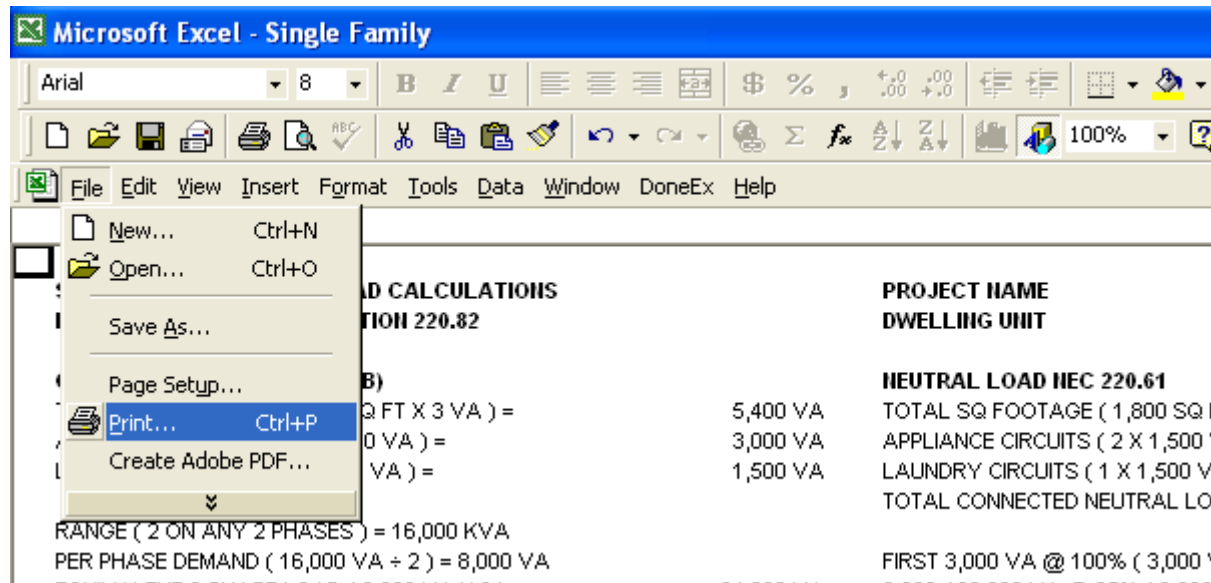
NOTE: Phase column only appears when using a 3-Phase panel.

PRINTING

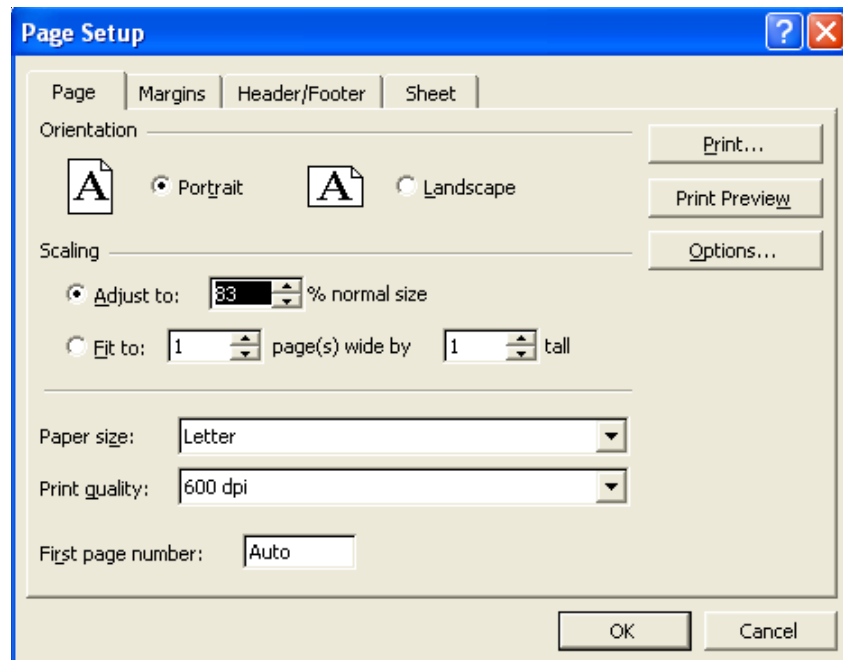
To print your load calculations click on the Calcs Tab.



Then select the File Print Command



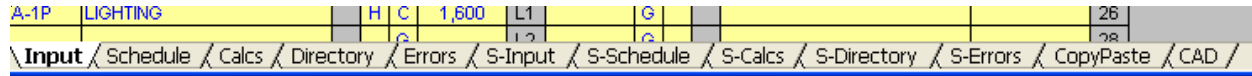
If the calculations print on more than one page, go to the “File Page Setup Command” and reduce the percentage.



USING HOUSE PANEL TEMPLATE

USING THE TABS

The template has twelve (12) tabs.



The first five tabs are for the Panel and the second five tabs are for the Sub Panel.

Each tab has a special purpose:

Panel Tabs

Input - This sheet is used to enter information.

Schedule - This sheet is used to review and print the panel schedule.

Calcs - This sheet is used to review and print load calculations.

Directory - This sheet is used to review and print the circuit directory.

Errors - This sheet is used to review and print the errors.

Sub Panel Tabs

S-Input - This sheet is used to enter information.

S-Schedule - This sheet is used to review and print the panel schedule.

S-Calcs - This sheet is used to review and print load calculations.

S-Directory - This sheet is used to review and print the circuit directory.

S-Errors - This sheet is used to review and print the errors.

Misc. Tabs

Copy/Paste - This sheet explains the Paste Values command for Excel.

CAD - This sheet explains how to use the Copy Picture command and paste into a CAD program.

GENERAL ENTRIES

Some cells in the template files are protected. You may only enter information into certain cells. If you are using a color monitor, these cells are yellow or lime green.

PANEL	HP1		
FED FROM	MAIN PANEL		
# OF CIRCUITS	84		
HI VOLTAGE	240		
LOW VOLTAGE	120	FEEDER	
PHASE	1	NUMBER OF CABLES	1
FEEDER TYPE	SER	FEEDER CABLE	SER CABLE
		WMIRE SIZE L1	#1
		WMIRE SIZE L2	#1
		WMIRE SIZE NEUTRAL	#1
WMIRE CU/AL?	AL	WMIRE SIZE GROUND	#3
WMIRE TEMP °C	75	SUB PANEL BKR (CIRCUITS 1 & 2)	1-PHASE
WMIRE LENGTH	10'		
MINIMUM AMPS	100		
# KITCHEN LOADS	0		
% FACTOR	0		
MAIN BKR / FUSE	Y		
BREAKER SIZE	100		

Yellow Cells

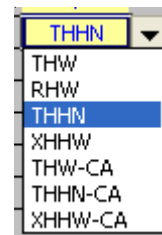
Lime Green Cells

Each unprotected yellow cell requires a user entry. If an invalid entry is made, a RED error message will appear to the left of the entry or an error message will appear in a pop up box.



When you select a cell a hint box will appear.

You may also use the pulldown menu



GENERAL ENTRIES (continued)

Below is a list of valid entries for the general information section of the panel schedule.

PANEL	<input type="text" value="P1"/>	Enter the panel name such as LPA. If entry is too long it may be cut off when printed. (As a general rule 22 characters are allowed.)
# OF CIRCUITS	<input type="text" value="30"/>	Enter number of circuits. (Even number from 6 to 84) or use the pulldown menu.
PHASE	<input type="text" value="3Y"/>	Enter phase. Note: You may put a 1-Phase panel on a 3-Phase source.
GND WIRE Y/N	<input type="text" value="Y"/>	Enter Y or N. If you enter Y, an equipment ground conductor will be added to the feeder conduit(s).
WIRE TYPE	<input type="text" value="THHN"/>	Select the wire type.
WIRE CU/AL?	<input type="text" value="CU"/>	Enter CU or AL.
WIRE TEMP	<input type="text" value="75"/>	Enter the wire insulation temperature.
WIRE LENGTH	<input type="text" value="20"/>	Enter wire length.
CONDUIT TYPE	<input type="text" value="EMT"/>	Select conduit type.
MINIMUM AMPS	<input type="text" value="100"/>	Enter minimum amps. If the load exceeds the minimum amps, the program will automatically size the wire for Code requirements.
KITCHEN LOADS	<input type="text" value="5"/>	Enter the number of kitchen loads.
% FACTOR	<input type="text" value="20"/>	Enter percentage factor. Example: If you enter 20, the program will provide 20% spare capacity for future loads. You may also use this factor to adjust for voltage drop.
MAIN BKR / FUSE	<input type="text" value="Y"/>	Enter Y or N. If you enter Y the program will size the main breaker.

GENERAL ENTRIES (continued)

SUB PANEL BKR

3-PHASE

Select choice from pulldown menu. If you want a sub panel fed from this panel, select 1-Phase or 3-Phase.

NOTE: If you select 1-phase, the program will automatically place a 2-pole circuit breaker in circuit positions 1 & 3.

If this is a 3-phase delta panel feeding 1-phase sub panel, the program will automatically place a 3-pole circuit breaker in circuit positions 1, 3, & 5. In this case the 1-phase sub panel will be connected to L1 and L3.

If you select 3-phase, the program will automatically place a 3-pole circuit breaker in circuit positions 1, 3, & 5.

CIRCUIT ENTRIES (continued)

LOAD IDENTIFIERS

H (HARMONIC LOAD)

On 3-phase wye panels, loads subject to harmonic currents (such as electronic ballast and computer equipment) must be identified by placing an "H" in the harmonic identifier column.

#	BKR	CIRCUIT DESCRIPTION	H	I	
1	20A-1P	LIGHTING	H	C	1,600
3	20A-1P	LIGHTING	H	C	1,600
5	20A-1P	LIGHTING	H	C	1,600

Enter "H" or a space (Space Bar)

HOW THE PROGRAM CALCULATES HARMONIC LOADS.

When the harmonic load is 50% or more of the load (on 3-phase wye panels) the NEC requires the neutral conductor to be considered a current carrying conductor.

Therefore, the feeder conduit has four (4) current carrying conductors and the conductor ampacity must be derated to 80%. The program does this automatically.

ENTERING CIRCUIT LOADS

LINE TO NEUTRAL LOADS (1-Pole Breaker)

#	BKR	CIRCUIT DESCRIPTION	N	H	I		
1	20A-1P	LIGHTING		H	C	1,600	L1
3				H	C		L2
5				H	C		L3

Enter the VA (Volts X Amps) into the cell.

LINE TO LINE LOADS (2-Pole Breaker)

Enter one half of the VA in each cell.

#	BKR	CIRCUIT DESCRIPTION	N	H	I		
1	60A-2P	AC UNIT			M	6,000	L1
3	X X X	X X X			M	6,000	L2
5				H	C		L3

Example: (50 Amps X 240 Volts) = 12,000 VA
(12,000 VA ÷ 2) = 6,000 VA in each cell

LINE TO LINE LOADS (3-Pole Breaker)

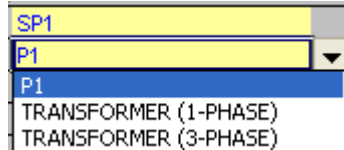
Enter one third of the VA in each cell.

#	BKR	CIRCUIT DESCRIPTION	N	H	I		
1	X X X	X X X			M	4,803	L1
3	50A-3P	AC UNIT			M	4,803	L2
5	X X X	X X X			M	4,803	L3

Example: (40 Amps X 208 Volts X 1.732) = 14,410 VA
(14,410 VA ÷ 3) = 4,803 VA in each cell

SUB PANEL GENERAL ENTRIES

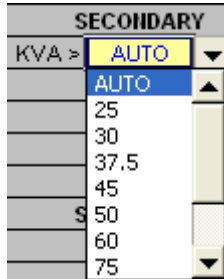
FED FROM



A dropdown menu with a yellow background. The top item is 'SP1'. Below it, 'P1' is selected and highlighted in blue. Below 'P1', there are two options: 'TRANSFORMER (1-PHASE)' and 'TRANSFORMER (3-PHASE)'.

Select Choice

KVA



A dropdown menu titled 'SECONDARY'. The label 'KVA >' is to the left. The top item is 'AUTO' and is selected. Below it are numerical values: 25, 30, 37.5, 45, 50, 60, and 75.

If you select a transformer, you can select the KVA rating or select AUTO and the program will size the transformer automatically.

VD ADJUSTMENT

If you are using a transformer, a voltage drop adjustment appears. Use this rather than % Factor to adjust for voltage drop.

XMFR % Z RATING

If you are using a transformer, a transformer % Z rating appears. Enter the % Z rating of the transformer.

PRINTOUTS

Each panel schedule template is designed to print out four (4) sheets for the panel and four (4) sheets for the sub panel.

- Panel Schedule
- Load Calculation
- Directory
- Error Checking Report

Using the mouse, click on the tab to display the sheet you wish to print. When the sheet is displayed, use the FILE/PRINT command.

NO COPY/PASTE

Do not use the COPY and PASTE commands on this template as they can corrupt the file.

Each cell in this template has been formatted with error checking and performance codes. When you copy a cell and use the paste command, these formats and performance codes are pasted to the new location.

PASTE SPECIAL (Values Only)

To avoid corrupting the file use the COPY and the EDIT/PASTE SPECIAL command selecting VALUES from the paste special menu.

Click on "Values"
and click OK

